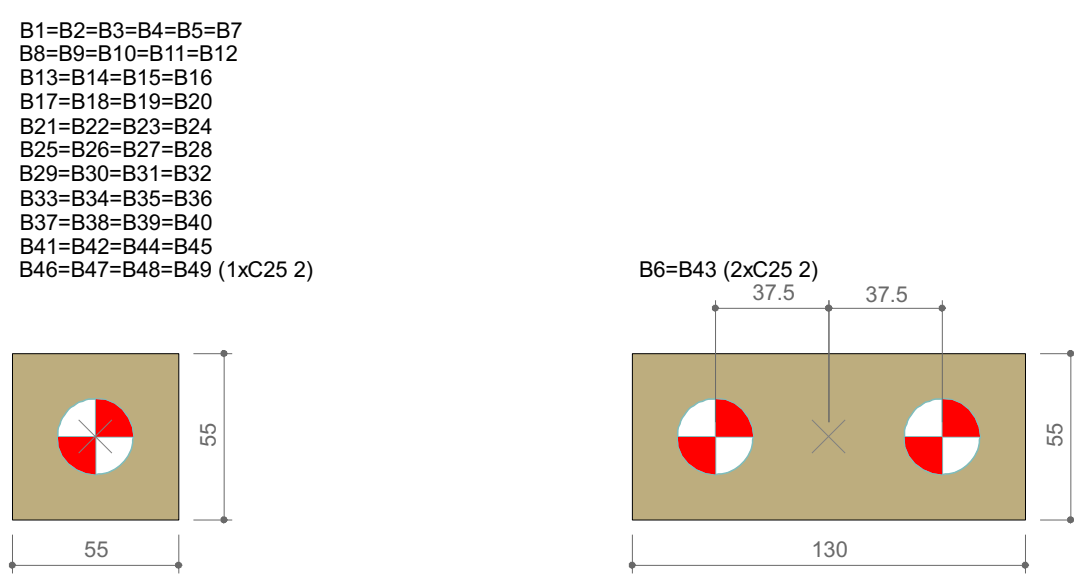



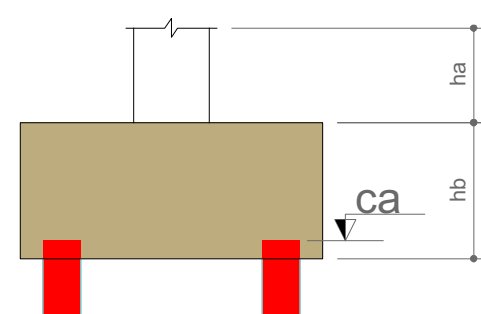
Planta de localização
escala 1:100



Legenda dos blocos
escala 1:25

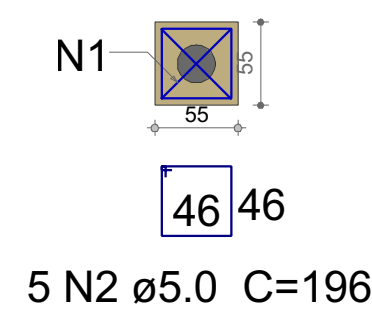
Nome	Seção	X (cm)	Y (cm)	Carga Máx. (t)	Carga Min. (t)	Lado B (cm)	Lado H (cm)	H0 (cm)	H1 (cm)	H2 (cm)	Estaca	Base (cm)	Base (cm)
P1	20x40	6066.32	2908.96	3.2	1.9	55	55	0	50	1	C25 2	-35	
P2	20x40	6273.82	2908.96	3.8	1.9	55	55	0	50	1	C25 2	-45	
P3	20x40	6431.32	2908.96	21.2	16.6	55	55	0	50	1	C25 2	-35	
P4	20x40	6588.82	2908.96	3.8	2.5	55	55	0	50	1	C25 2	-35	
P5	15x30	6066.32	2403.96	7.5	4.8	55	55	0	50	1	C25 2	-35	
P6	20x40	6273.82	2403.96	33.8	25.3	55	55	0	50	2	C25 2	-45	
P7	20x40	6431.32	2403.96	20.1	15.4	55	55	0	50	1	C25 2	-35	
P8	20x40	6588.82	2403.96	4.8	2.7	55	55	0	50	1	C25 2	-35	
P9	15x30	6066.32	1868.96	7.8	4.9	55	55	0	50	1	C25 2	-35	
P10	20x40	6273.82	1868.96	13.7	8.2	55	55	0	50	1	C25 2	-35	
P11	15x40	6431.32	1868.96	21.7	17.0	55	55	0	100	1	C25 2	-45	
P12	15x40	6588.82	1868.96	1.1	0.8	55	55	0	100	1	C25 2	-45	
P13	20x40	6273.82	1363.96	23.7	18.0	55	55	0	50	1	C25 2	-35	
P14	20x40	6431.32	1363.96	8.4	5.8	55	55	0	50	1	C25 2	-35	
P15	15x40	6588.82	1363.96	2.3	2.2	55	55	0	50	1	C25 2	-35	
P16	15x30	6066.32	1226.96	7.2	4.7	55	55	0	50	1	C25 2	-35	
P17	20x40	6273.82	1363.96	16.2	11.3	55	55	0	50	1	C25 2	-35	
P18	15x40	6431.32	1363.96	22.1	17.7	55	55	0	50	1	C25 2	-35	
P19	20x40	6273.82	843.96	18.2	13.3	55	55	0	50	1	C25 2	-35	
P20	20x40	6431.32	843.96	8.8	5.9	55	55	0	50	1	C25 2	-35	
P21	15x40	6588.82	843.96	2.2	2.2	55	55	0	50	1	C25 2	-35	
P22	15x30	6066.32	843.96	1.8	1.6	55	55	0	50	1	C25 2	-35	
P23	20x40	6273.82	843.96	1.2	0.8	55	55	0	50	1	C25 2	-35	
P24	15x40	6431.32	843.96	10.2	8.1	55	55	0	100	1	C25 2	-45	
P25	15x40	6588.82	843.96	12.3	8.9	55	55	0	50	1	C25 2	-35	
P26	20x40	6273.82	843.96	10.0	7.5	55	55	0	50	1	C25 2	-35	
P27	20x40	6431.32	843.96	9.8	6.4	55	55	0	50	1	C25 2	-35	
P28	20x40	6588.82	843.96	9.0	6.5	55	55	0	50	1	C25 2	-35	
P29	20x40	6273.82	323.96	8.7	7.6	55	55	0	50	1	C25 2	-35	
P30	15x30	6431.32	323.96	8.9	7.9	55	55	0	50	1	C25 2	-35	
P31	15x40	6588.82	323.96	13.1	8.7	55	55	0	50	1	C25 2	-35	
P32	20x40	6273.82	323.96	11.5	8.6	55	55	0	50	1	C25 2	-35	
P33	20x40	6431.32	323.96	9.7	6.2	55	55	0	50	1	C25 2	-35	
P34	20x25	6066.32	91.46	2.5	1.8	55	55	0	50	1	C25 2	-35	
P35	20x45	6273.82	91.46	10.3	7.8	55	55	0	50	1	C25 2	-35	
P36	20x30	6431.32	91.46	6.2	3.9	55	55	0	50	1	C25 2	-35	
P37	20x40	6273.82	91.46	12.1	8.2	55	55	0	50	1	C25 2	-35	
P38	15x40	6431.32	91.46	20.3	16.0	55	55	0	50	1	C25 2	-35	
P39	15x40	6588.82	91.46	1.7	1.4	55	55	0	50	1	C25 2	-35	
P40	20x40	6273.82	91.46	14.9	10.9	55	55	0	50	1	C25 2	-35	
P41	20x40	6431.32	91.46	7.6	5.0	55	55	0	50	1	C25 2	-35	
P42	20x30	6588.82	91.46	7.8	5.0	55	55	0	50	1	C25 2	-35	
P43	20x40	6273.82	91.46	25.2	13.0	55	55	0	50	2	C25 2	-45	
P44	20x40	6431.32	91.46	18.8	14.3	55	55	0	50	1	C25 2	-35	
P45	20x40	6588.82	91.46	4.5	2.5	55	55	0	50	1	C25 2	-35	
P46	20x25	6066.32	91.46	3.5	2.1	55	55	0	50	1	C25 2	-35	
P47	20x40	6273.82	91.46	15.0	11.5	55	55	0	50	1	C25 2	-35	
P48	20x40	6431.32	91.46	16.7	12.6	55	55	0	50	1	C25 2	-35	
P49	20x40	6588.82	91.46	3.7	2.5	55	55	0	50	1	C25 2	-35	

Estacas			
Simbologia	Nome	d (cm)	Quantidade
	C25 2	25.00	51



B1=B5=B9=B15=B16=B21=B22
=B23=B28=B29=B30=B34
=B35=B36=B37=B39=B42
1x25 2

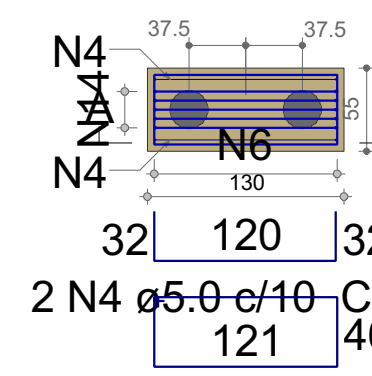
PLANTA
ESC 1:50



5 N2 ø5.0 C=196
2 N1 ø5.0 C=190

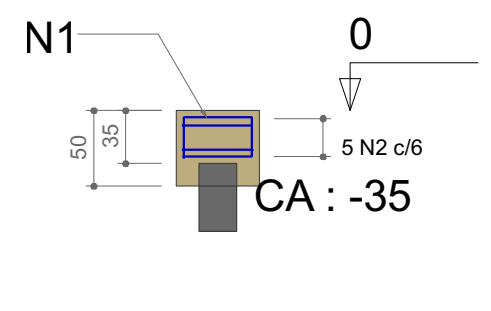
B6=B43
2x25 2

PLANTA
ESC 1:50



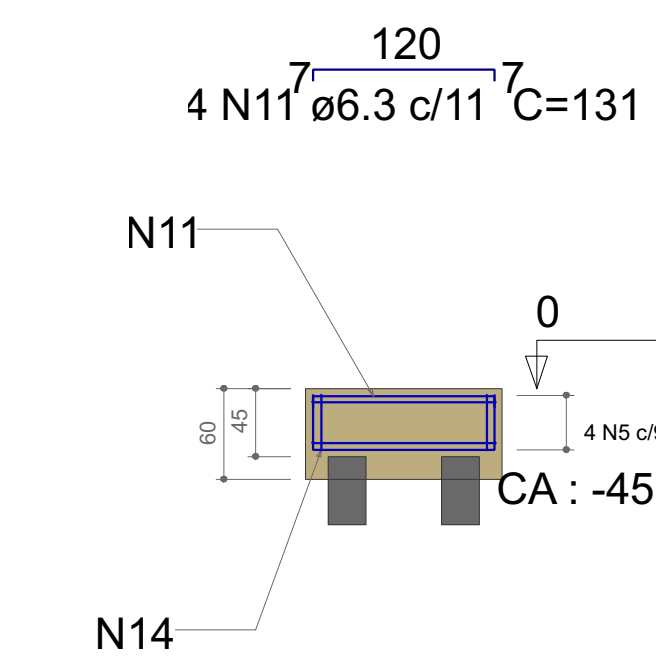
4 N5 ø5.0 C=346
5 N14 ø12.5 c/6 C=186

CORTE
ESC 1:50



63 26
2 N1 ø5.0 C=190

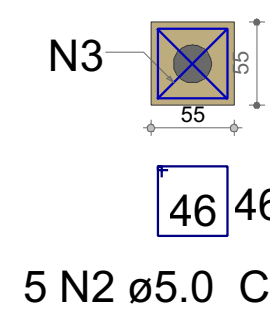
CORTE A-A
ESC 1:50



36 120 36
5 N14 ø12.5 c/6 C=186

B2=B46
1x25 2

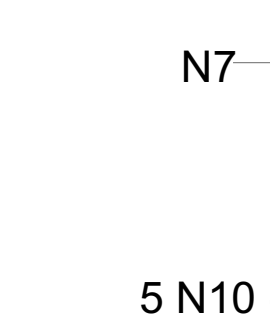
PLANTA
ESC 1:50



5 N2 ø5.0 C=196

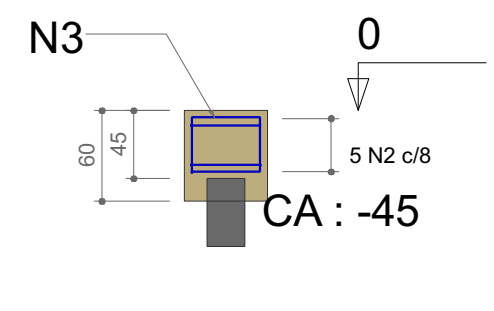
B10=B25=B31
1x25 2

PLANTA
ESC 1:50



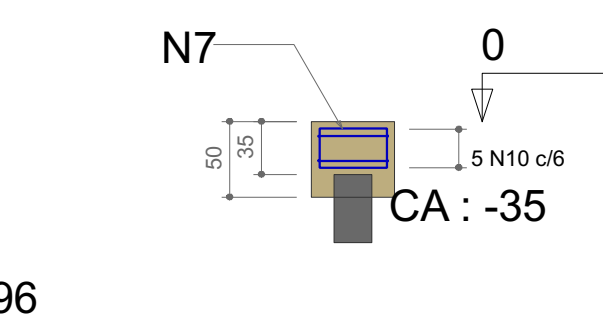
5 N10 ø6.3 C=196

CORTE
ESC 1:50



63 36
2 N3 ø5.0 C=210

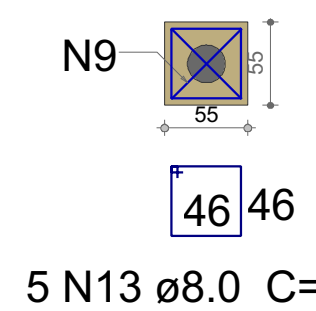
CORTE
ESC 1:50



63 26
2 N7 ø5.0 C=188

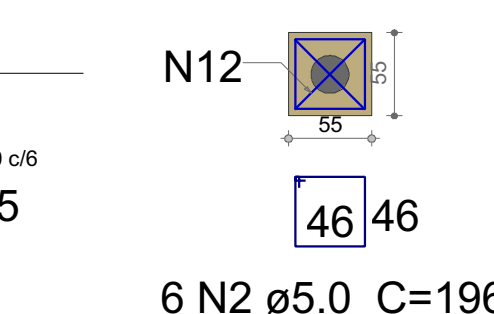
B18=B38
1x25 2

PLANTA
ESC 1:50



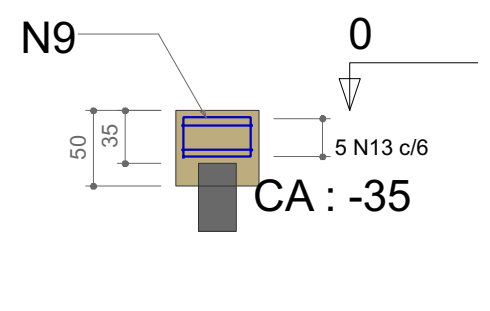
5 N13 ø8.0 C=196

CORTE
ESC 1:50



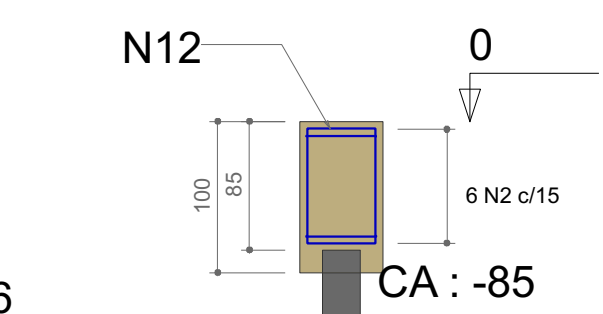
6 N2 ø5.0 C=196

CORTE
ESC 1:50



62 26
2 N9 ø6.3 C=188

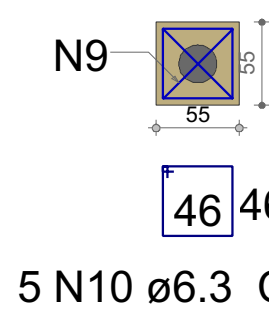
CORTE
ESC 1:50



63 76
2 N12 ø6.3 C=290

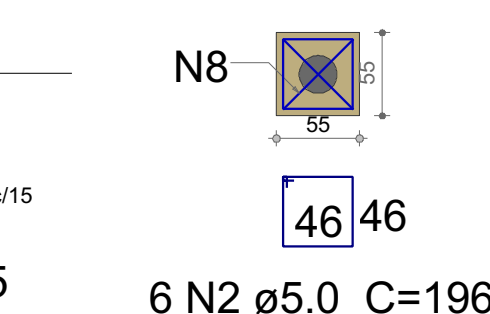
B7=B17=B19=B40=B44=B47
1x25 2

PLANTA
ESC 1:50



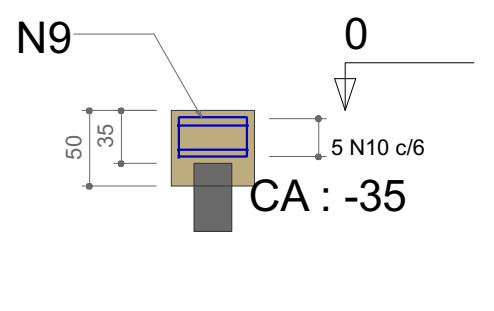
5 N10 ø6.3 C=196

CORTE
ESC 1:50



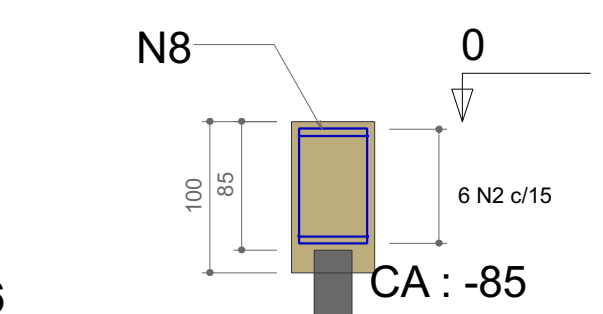
6 N2 ø5.0 C=196

CORTE
ESC 1:50



62 26
2 N9 ø6.3 C=188

CORTE
ESC 1:50



63 76
2 N8 ø5.0 C=290

Relação do aço

B11	2xB24	3xB31
2xB48	2xB46	6xB47
	18xB49	

AÇO	N	DIAM (mm)	QUANT	C.UNIT (cm)	C.TOTAL (cm)
CA60	1	5.0	36	190	6840
	2	5.0	118	196	23128
	3	5.0	4	210	840
	4	5.0	4	182	728
	5	5.0	8	346	2768
	6	5.0	10	174	1740
	7	5.0	6	188	1128
CA50	8	5.0	4	290	1160
	9	6.3	16	188	3008
	10	6.3	45	196	8820
	11	6.3	8	131	1048
	12	6.3	2	290	580
	13	8.0	10	196	1960
	14	12.5	10	186	1860